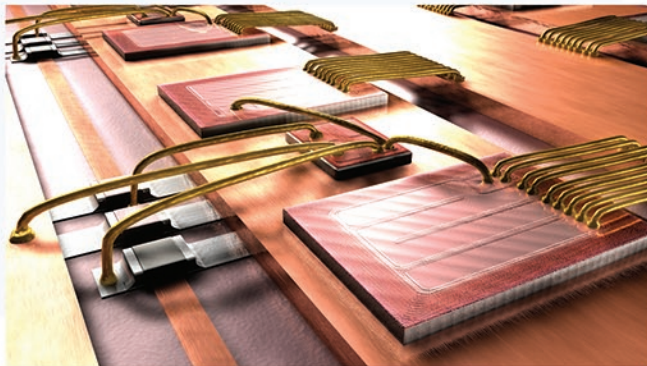


"We work very hard in integrating the animation to the physics, the animation to the sound, and the animation to the ideas. We try to tie these very closely together, so that you're not just looking at some imaginary undefined object, but something very specific that you can take home with you."

~Michael J. Hennessy, Ph.D  
President, MTECH Laboratories

*"You can see it as if you just made it  
...it's a prototyping instrument."*

*"Animation provides new insights into mechanical structures, and reminds you of details you may not have considered. It makes you think about how something really works...."*



For examples of MTECH Studios' Animations, please visit our website, request a sample DVD, and view our online gallery.

[www.mtechstudios.com](http://www.mtechstudios.com)

MTECH Studios, a division of  
MTECH Laboratories, LLC

MTECH Laboratories was founded in 2001 to research, develop, and commercialize spin-off technologies associated with magnetic resonance imaging (MRI).

MTECH is located in Ballston Spa, NY, and works closely with high-tech companies, government agencies, universities, and hospitals.



For more information, please contact:

MTECH Studios,  
a division of  
MTECH Laboratories, LLC  
Building 45C  
831 Route 67  
PO Box 227

Ballston Spa, NY 12020-0227

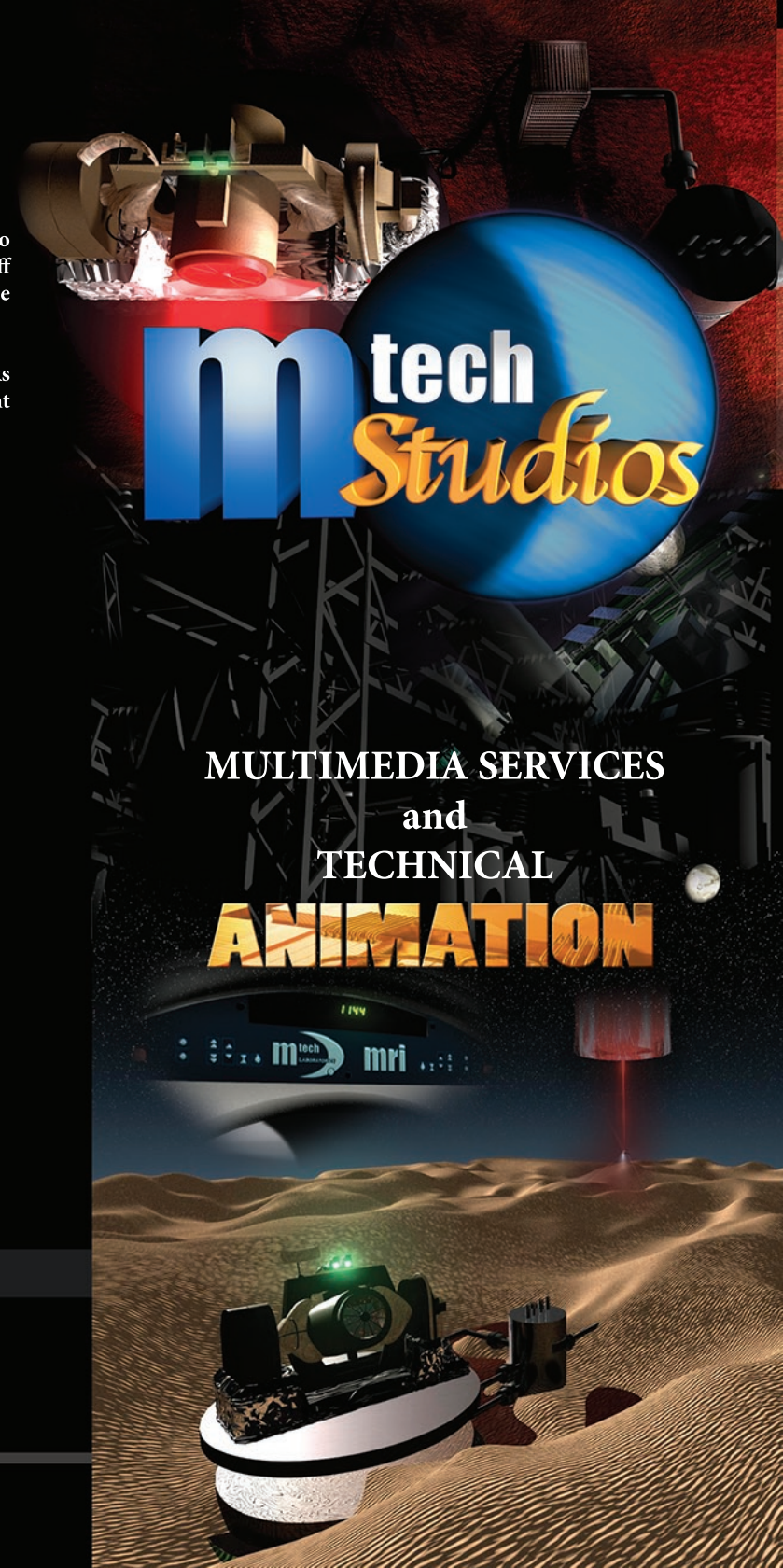
Tel: 518-885-6436

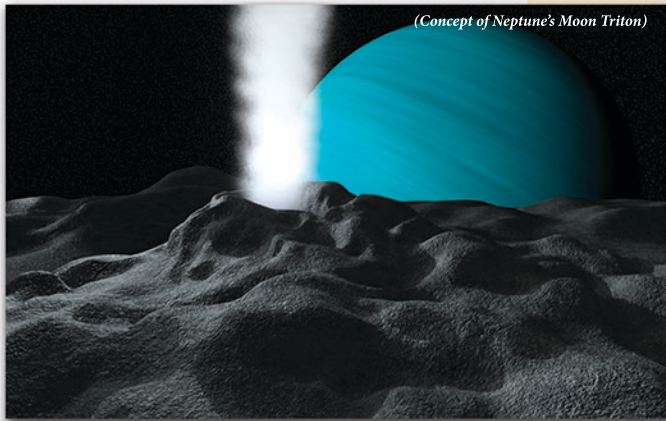
Fax: 518-885-6428

E-mail: [info@mtechstudios.com](mailto:info@mtechstudios.com)

[www.mtechstudios.com](http://www.mtechstudios.com)

**m**tech  
Studios



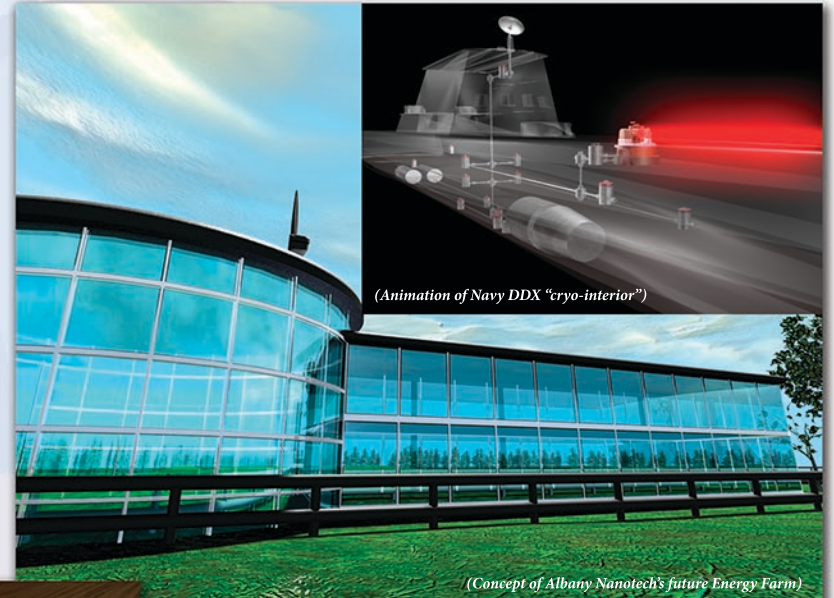


(Concept of Neptune's Moon Triton)

At **MTECH Studios**, you'll receive the benefit of a creative research environment. MTECH's staff includes a top-notch graphics design team partnered with a technical support staff of **professional** engineers and scientists who specialize in research and development of medical, military, and commercial applications. MTECH's artists and scientists work closely together to offer a **unique** blend of technical realism and aesthetic **creativity**.

**Animation** is widely recognized as a **compelling** form of marketing communication. It is less well known that animation is a powerful **engineering tool**, which can **accelerate** product development and reduce overall production costs.

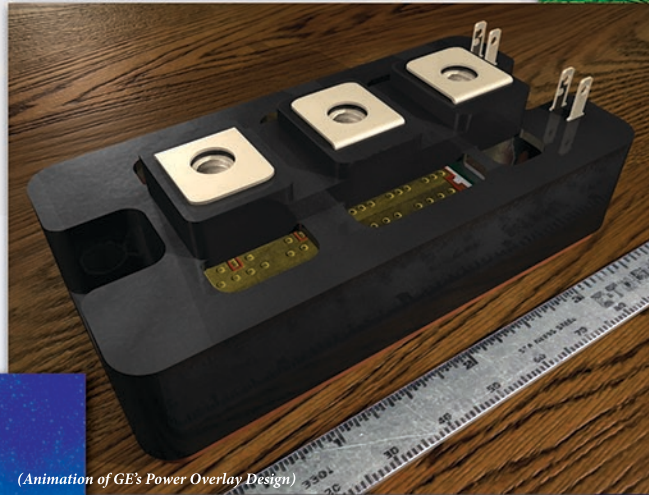
Animation is perhaps most effective as an **educational** tool, whether it is used for general learning or for highly specialized technical training. Other uses of this powerful tool include patent and medical animations, as well as business and technical presentations. It is an **essential** means of efficient communication, whether your intent is to inform or to entertain.



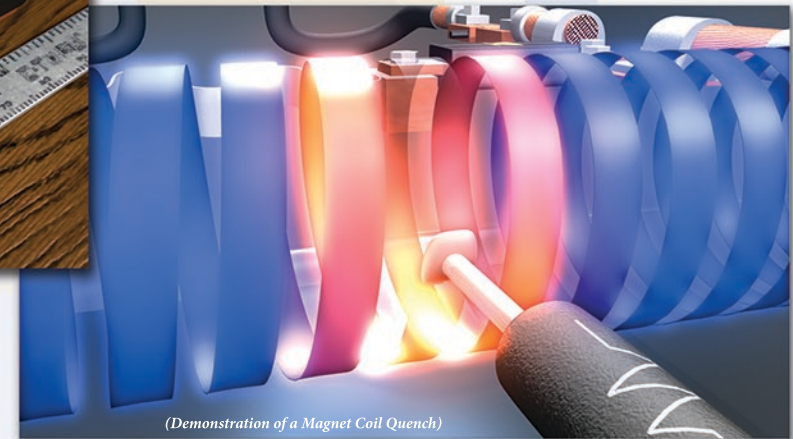
(Animation of Navy DDX "cryo-interior")

(Concept of Albany Nanotech's future Energy Farm)

Animation at MTECH is inventive, client friendly, milestone driven, fast, and **affordable**.



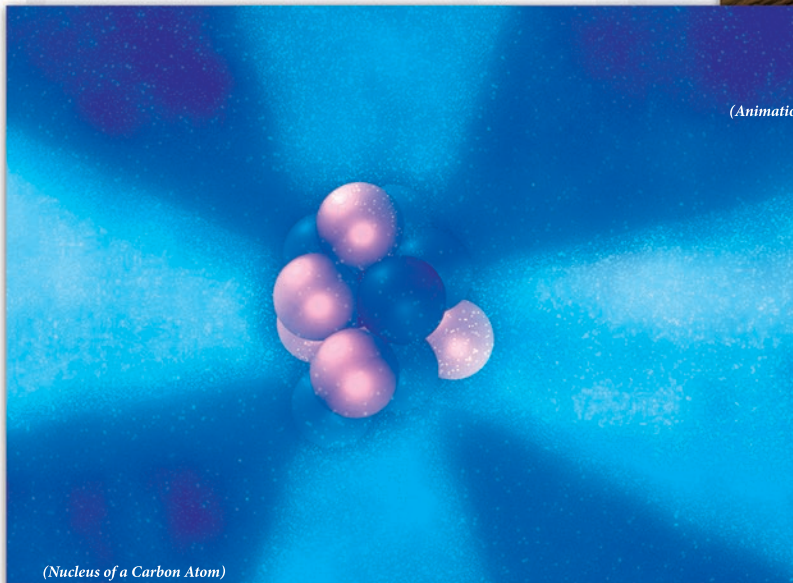
(Animation of GE's Power Overlay Design)



(Demonstration of a Magnet Coil Quench)

In addition to **inspirational** visual effects, MTECH's **state-of-the-art** animation studio also offers integrated video production, full, multi-channel sound, as well as musical and sound effect production services to further **enhance** the overall **impact** of your ideas.

At MTECH Studios, you enter an unparalleled atmosphere of graphic design backed by strong scientific and engineering experience.



(Nucleus of a Carbon Atom)